

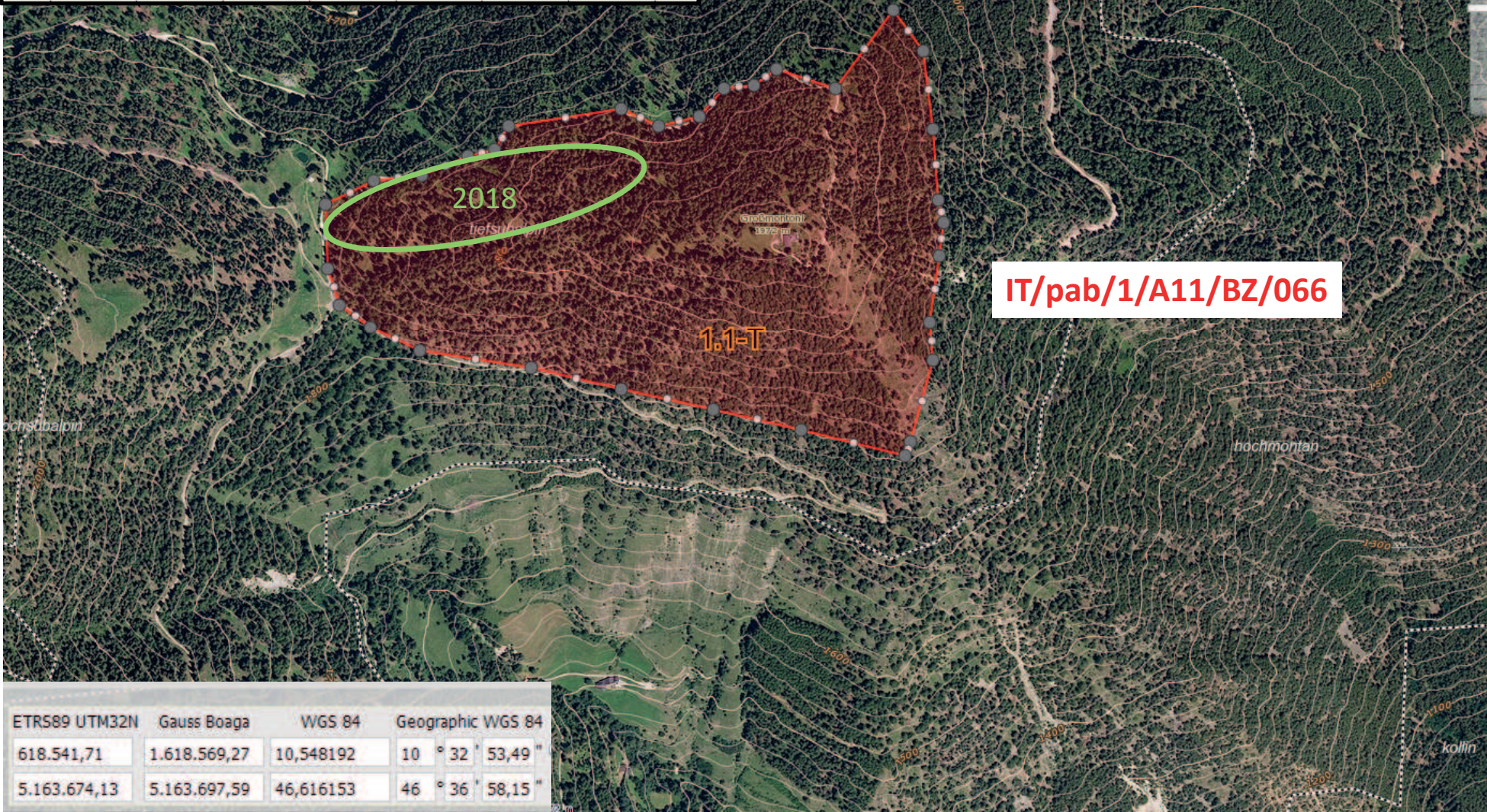


Autonome Provinz Bozen-Südtirol Amt für Forstverwaltung 32.1 I - 39100 Bozen • Brennerstr. 6 Tel. +39 0471 415318 - Fax +39 0471 415313 <a href="http://www.provinz.bz.it/landforstwirtschaft/wald-holz-almen/forstgaerten.asp">http://www.provinz.bz.it/landforstwirtschaft/wald-holz-almen/forstgaerten.asp</a>		Provincia Autonoma di Bolzano-Alto Adige Ufficio amministrazione forestale 32.1 I - 39100 Bolzano • Via Brennero 6 Tel. +39 0471 415318 - Fax +39 0471 415313 <a href="http://www.provincia.bz.it/agricoltura-foreste/bosco-legno-malghes/vivai-forestali.asp">http://www.provincia.bz.it/agricoltura-foreste/bosco-legno-malghes/vivai-forestali.asp</a>
		

pice\_abi\_17  
 Montoni (Prad a. St./Prat a. Stelvio - BZ)



ETRS89 UTM32N	Gauss Boaga	WGS 84	Geographic WGS 84
618.541,71	1.618.569,27	10,548192	10 ° 32 ' 53,49 "
5.163.674,13	5.163.697,59	46,616153	46 ° 36 ' 58,15 "